



## CONNECTING FOR HEALTH COMMON FRAMEWORK

---

Resources for Implementing Private and  
Secure Health Information Exchange

### ***Learning What Works: IOM Roundtable on Evidence-Based Medicine July 30, 2008***

*Carol C. Diamond MD, MPH  
Managing Director, Markle Foundation  
Chair, Connecting for Health*

# **Where we are today**

Learning What Works Best

IOM Roundtable on Evidence Based Medicine

# **IOM has clearly articulated the challenge...**

## ***Health care under-performs on many dimensions***

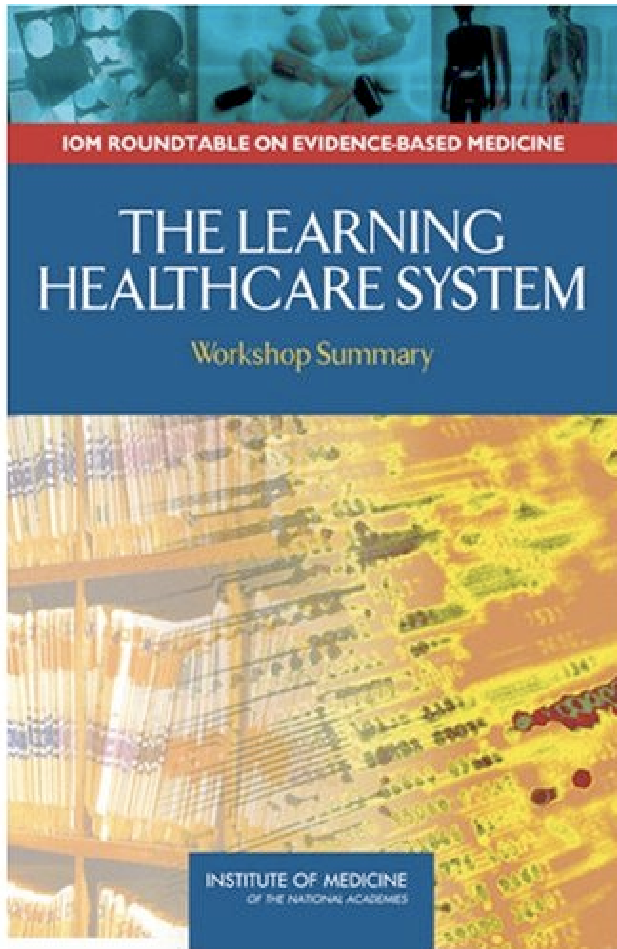
- high cost
- poor performance,
- inconsistent delivery of evidence based
- large variations in care delivered unrelated to outcomes and unexplained by burden of illness, etc.
- large gaps in evidence
- long time lags research
- a chasm in applying results to clinical care and
- a rate of innovation in devices, biologics and procedures that outpaces research on comparative effectiveness generally...
- and on what works best for a particular individual (personalized medicine)

# **IOM has clearly articulated the challenge...**

*Health care under-performs on many dimensions*

- Called for better information on the comparative effectiveness of diagnostic and therapeutic interventions
- To date, our methods, tools, investments and approaches to this problem have fallen short.

# IOM has created the vision *a "Learning Healthcare System"*



- Transformed by the availability and use of the best evidence for the collaborative health care choices of patient and provider;
- The process of discovery as a natural outgrowth of patient care; to ensure innovation, quality, safety, and value in health care.

# Urgency!

*"Rising health care costs represent the central fiscal challenge facing the country"*

Peter Orzag, Director, CBO

# What does a new center on comparative effectiveness require in the way of information networks?

- Success may be dependent on our ability to change our standard approaches to information collection and use.
  1. Clearly define the ultimate goal
  2. Be open to reset our definitions and assumptions about health data and research approaches
  3. Articulate new, broadly accepted working principles based on 21<sup>st</sup> century information paradigms
  4. Develop an information policy framework that broadly addresses public hopes and concerns

# 1. Clearly define the ultimate goal

Whose actions are you trying to impact with the information?



# Lets be clear about the goal

- Too often we let discussions about IT, data, standards, methods obscure our focus on the goal.
- Comparative effectiveness research is a tool
- Its ability to have impact on costs and outcomes depends on how it is used.
- Decision-makers should be more defined broadly than referring to those who need to develop guidelines or those who design benefits

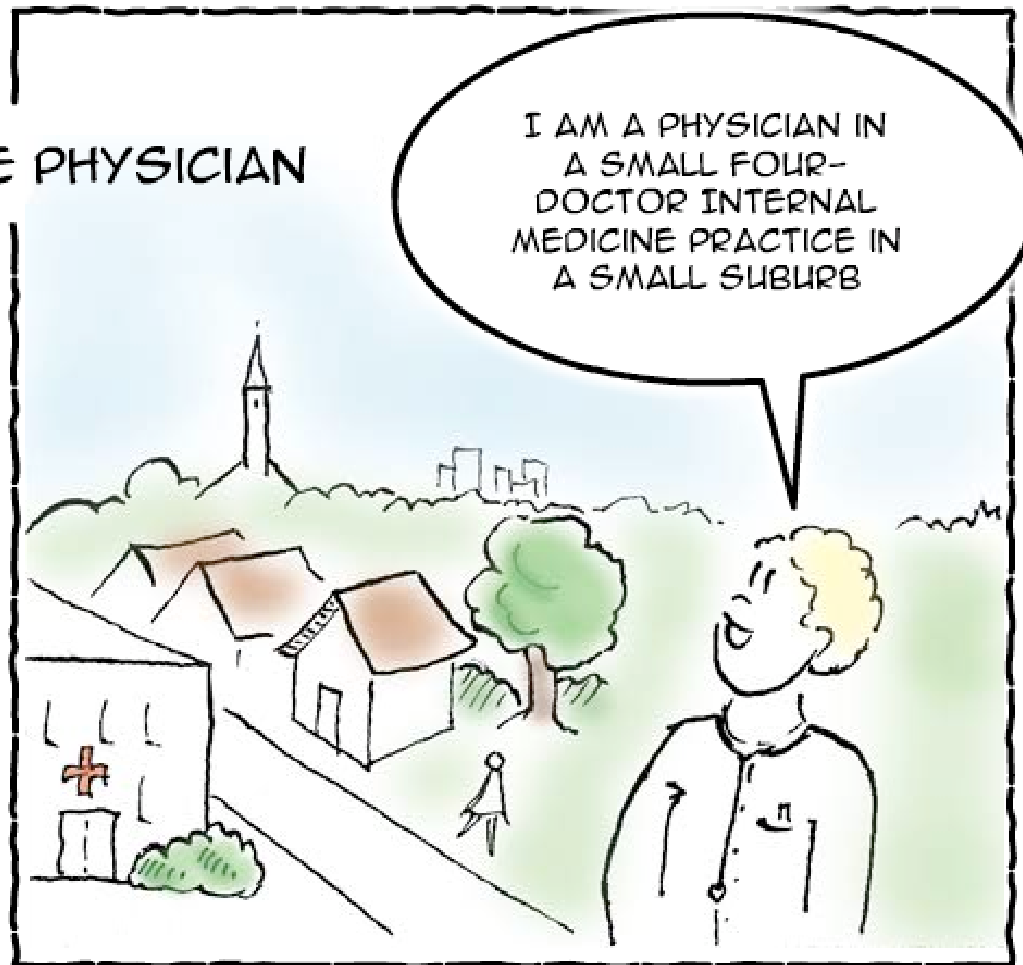
# The goal

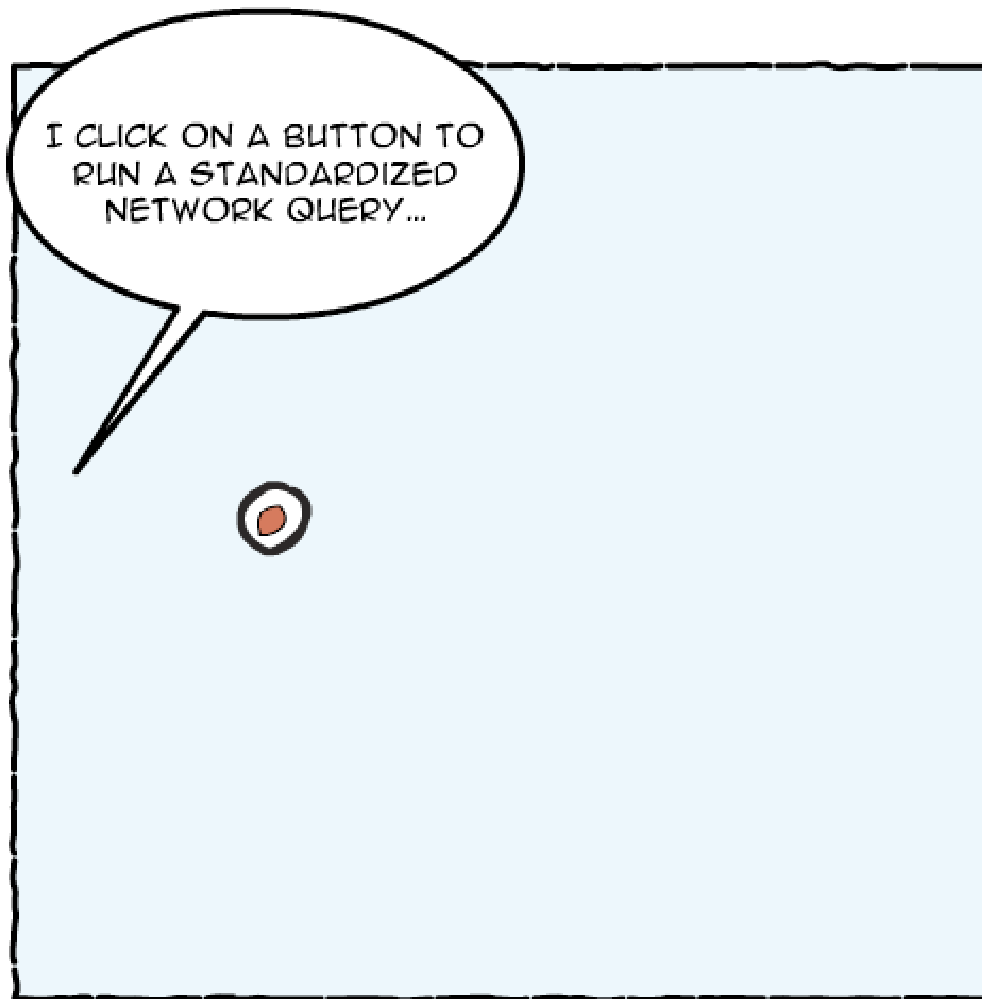
- Real transformation occurs when every clinical encounter is an opportunity to provide the right care to the right patient

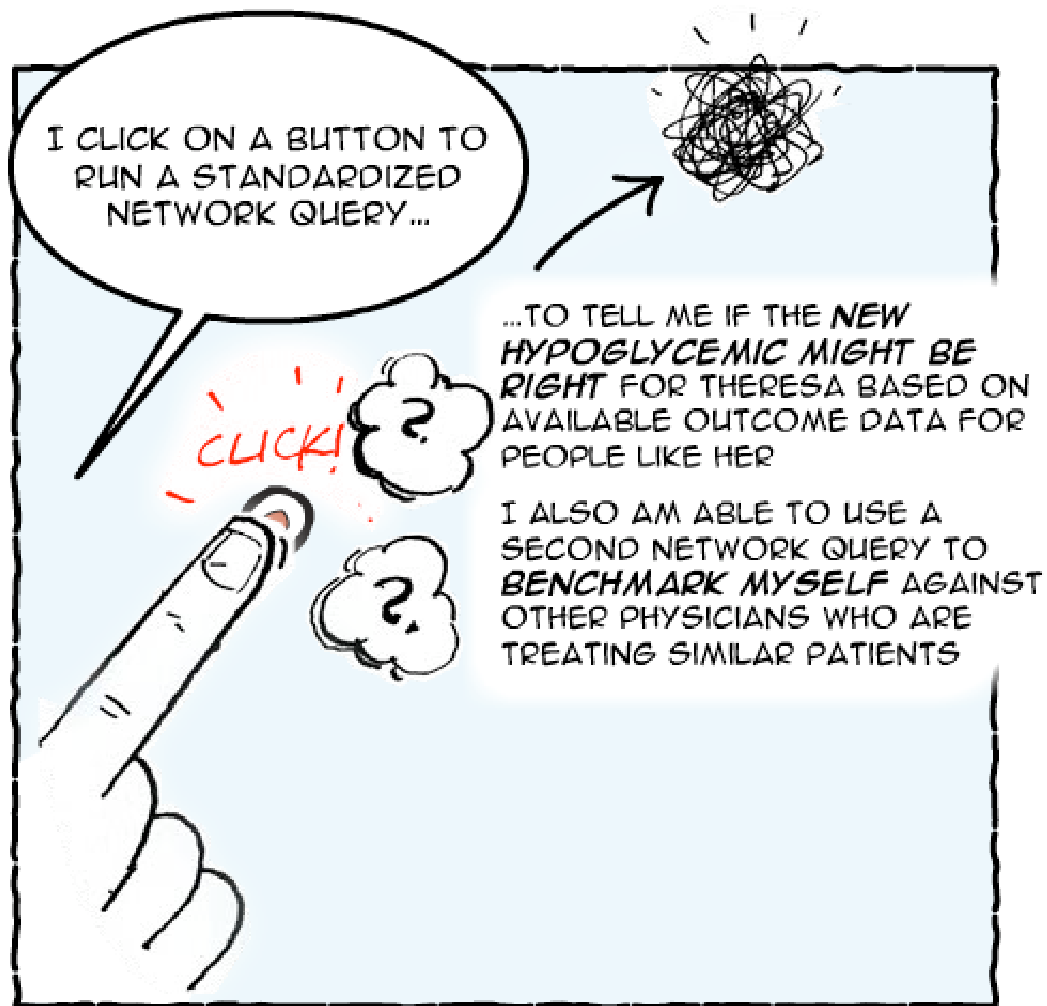
*A learning healthcare system is transformed by the availability and use of the best evidence for the collaborative health care choices of patient and provider*

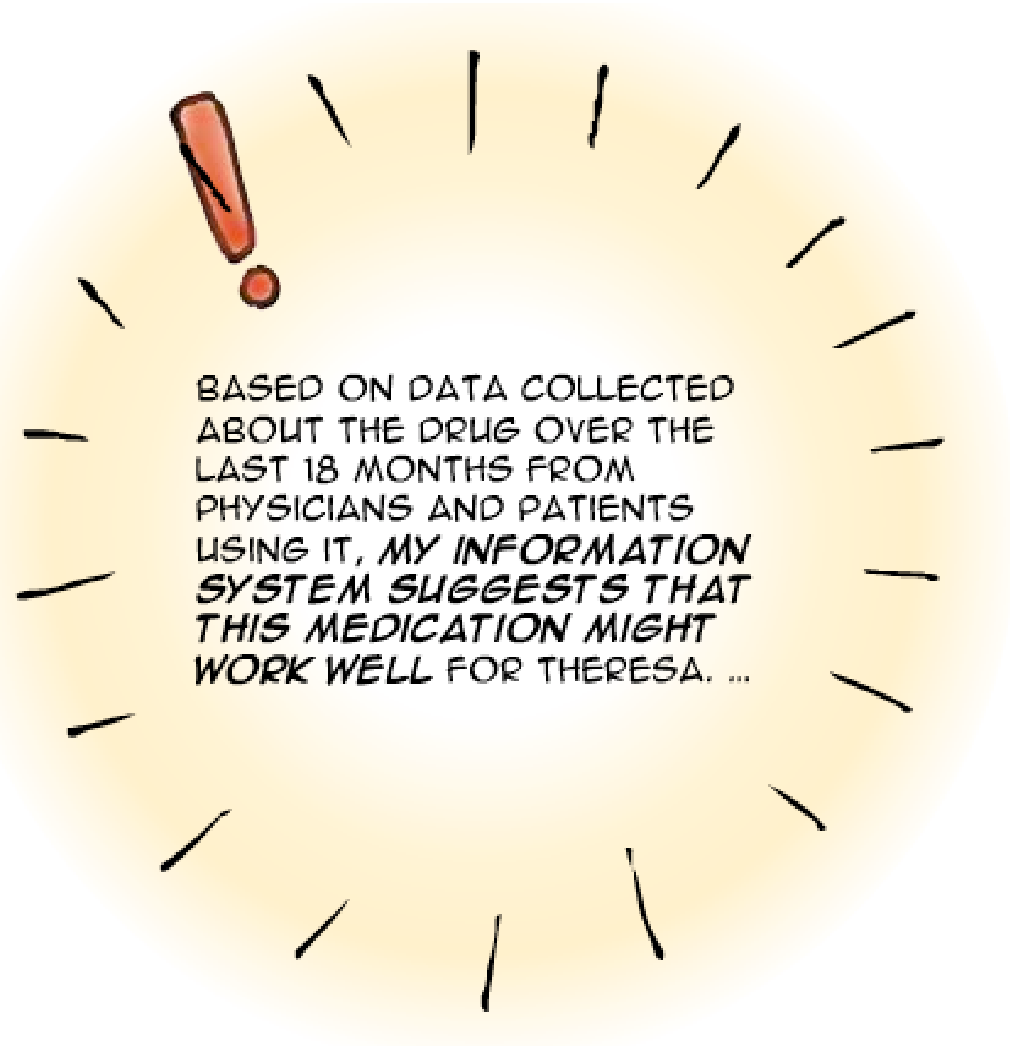
- A comprehensive approach to effectiveness research is inherently challenging today because of the lack of controlled environment for assessing therapeutic options and the heterogeneity of patient characteristics (never, always and “truth”)
- This almost by definition requires thinking in terms of connectivity and networks rather than databases

## THE PHYSICIAN



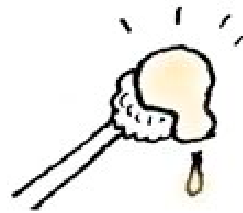




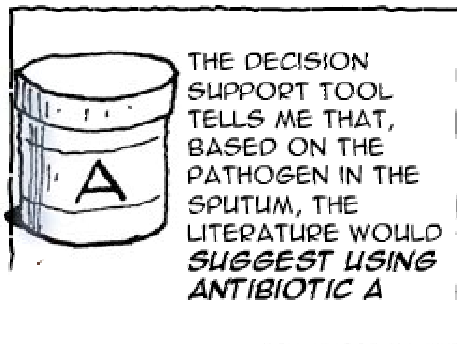


**HACK**

I ATTEND TO HER  
COUGH FIRST SINCE  
SHE HAS *SIGNS OF A  
RESPIRATORY  
INFECTION*



A QUICK *SPUTUM  
ANALYSIS* REVEALS A  
BACTERIAL PATHOGEN  
THIS TIME, WHICH I  
ASSUME TO BE AN  
OPPORTUNISTIC  
INFECTION FOLLOWING  
HER LONG BOUT WITH  
THE FLU



THE DECISION SUPPORT TOOL TELLS ME THAT, BASED ON THE PATHOGEN IN THE SPUTUM, THE LITERATURE WOULD SUGGEST USING ANTIBIOTIC A

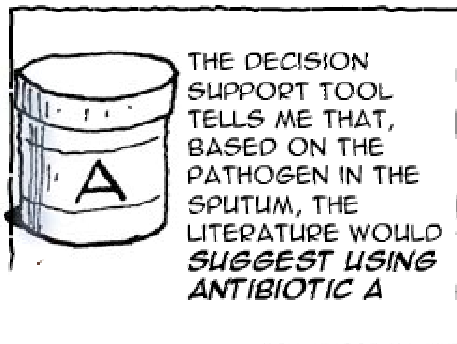


HOWEVER, IT *RECOMMENDS* THAT I CONSIDER THE FACT THAT IN THE LAST 4 WEEKS THERE HAVE BEEN 115 OTHER CASES OF *PNEUMONIA* CAUSED BY THIS SAME PATHOGEN IN MY COMMUNITY, AND THAT PATIENTS TREATED WITH *ANTIBIOTIC B* HAVE HAD *BETTER RESPONSE*...

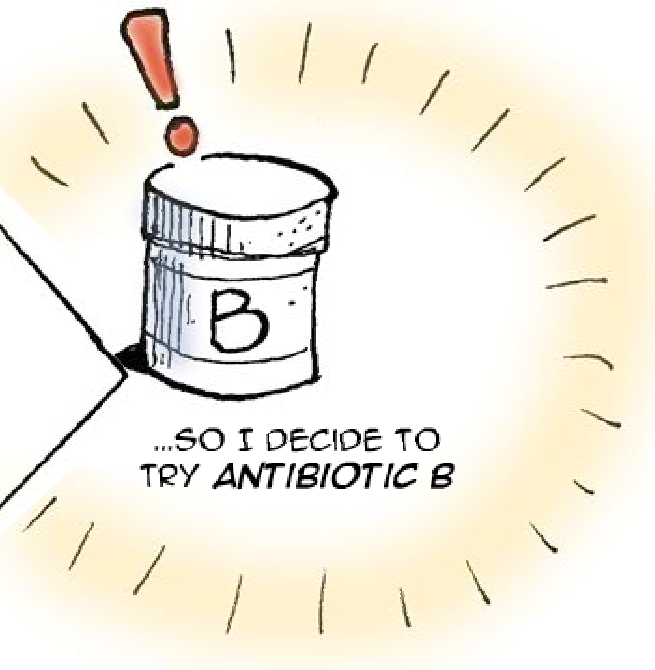


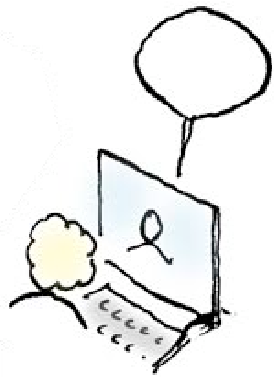
...SO I DECIDE TO TRY ANTIBIOTIC B





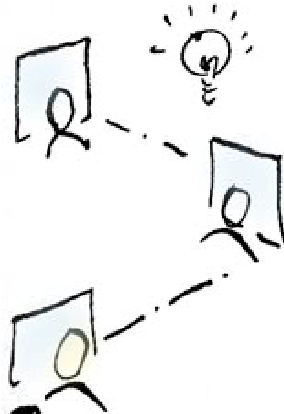
HOWEVER, IT *RECOMMENDS* THAT I CONSIDER THE FACT THAT IN THE LAST 4 WEEKS THERE HAVE BEEN 115 OTHER CASES OF *PNEUMONIA* CAUSED BY THIS SAME PATHOGEN IN MY COMMUNITY, AND THAT PATIENTS TREATED WITH *ANTIBIOTIC B* HAVE HAD *BETTER RESPONSE*...





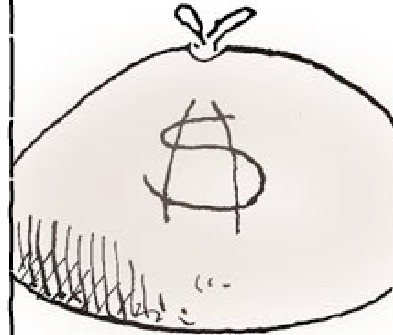
1.

MORE EFFICIENT  
AND EFFECTIVE  
MEANS TO INTERACT  
WITH PATIENTS



2.

FRESH  
OPPORTUNITIES TO  
COLLABORATE AS  
PART OF THE  
SCIENTIFIC AND  
MEDICAL  
COMMUNITY



3.

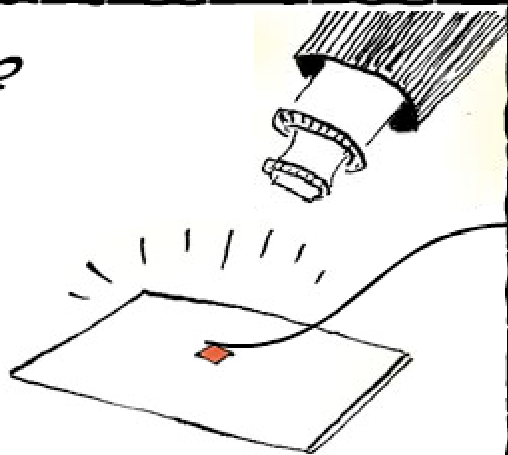
INNOVATIVE AND  
SUSTAINABLE  
FINANCIAL MODELS  
FOR OUR PRACTICE



4.

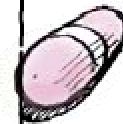
A TRANSFORMED  
OFFICE WHERE WE  
WORK AS A TEAM,  
DRAMATICALLY  
IMPROVING CARE  
AND OUR OWN LIVES

## THE POLICY-MAKER

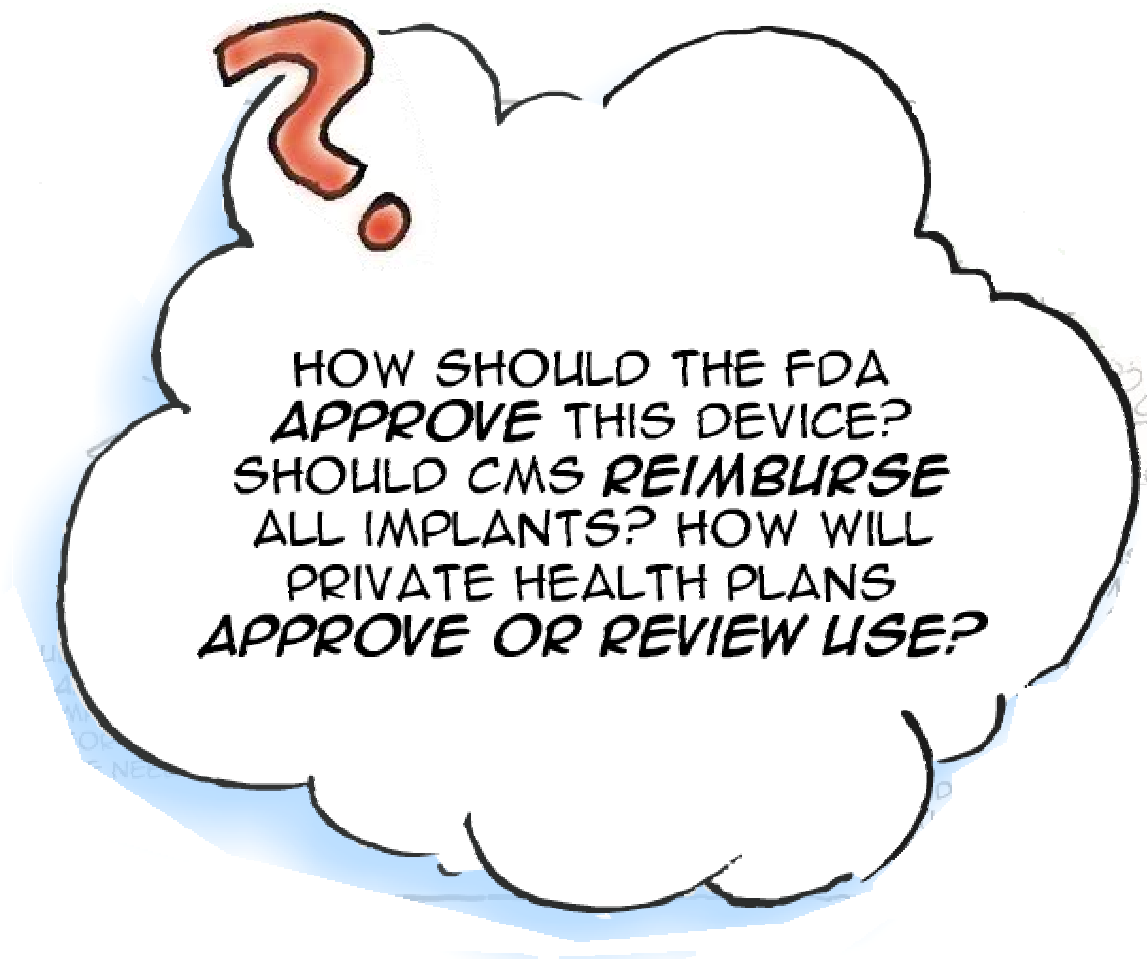


HEALTH PLANS BOTH PUBLIC AND PRIVATE WANT TO ANALYZE A **NEW, IMPLANTABLE RENAL NANO-DEVICE** THAT HAS RECENTLY COMPLETED CLINICAL TRIALS AND SHOWN GREAT BENEFIT FOR MANY PATIENTS WITH KIDNEY FAILURE, **PREVENTING** THE NEED FOR **DIALYSIS OR KIDNEY TRANSPLANT**.

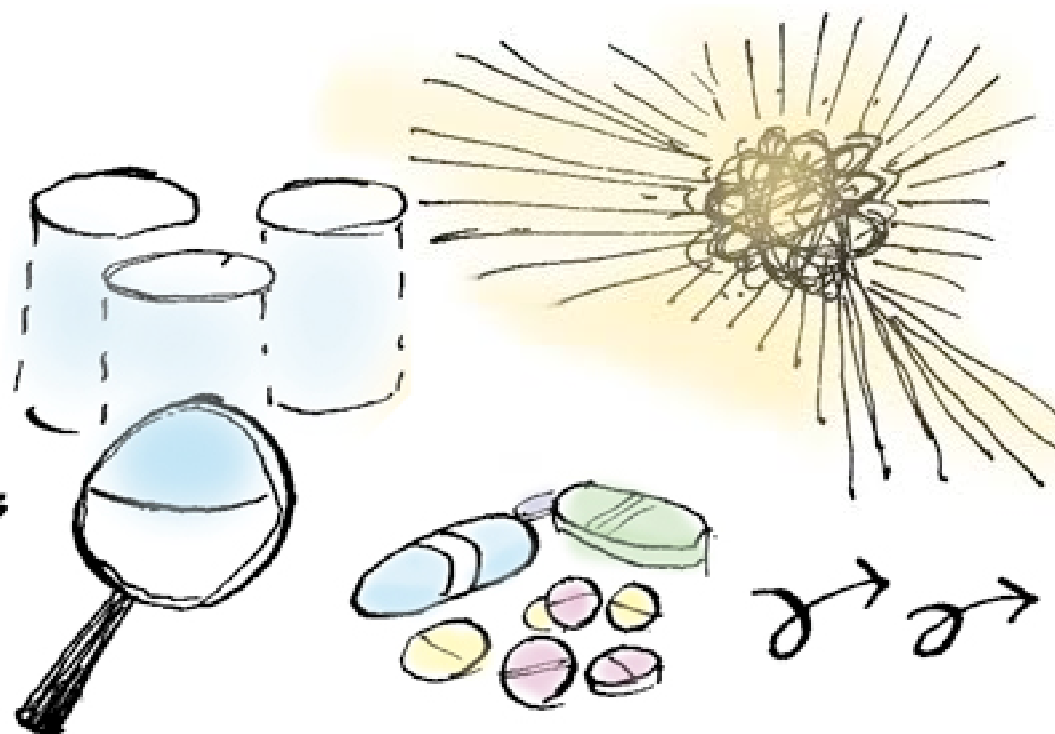
THE **COST** OF THE DEVICE AND THE RELATED SURGERY AND CONTINUED MONITORING AVERAGES \$40,000 PER PATIENT PER YEAR,



AND PATIENTS MUST **REMAIN COMPLIANT** WITH A NEW ORAL MEDICATION TO AVOID SERIOUS COMPLICATIONS



IT'S NOW COMMONPLACE FOR THE NETWORK TO ENABLE *QUERIES* ACROSS *MULTIPLE DATA SOURCES* THAT WERE ONCE *IMPENETRABLE SILOS*





PAYERS AND PUBLIC POLICYMAKERS HAVE A MUCH MORE GRANULAR **UNDERSTANDING** OF THE **EFFECTIVENESS** OF CERTAIN TREATMENTS, AND CAN **TARGET** PROVIDER AND PATIENT EDUCATION **INTERVENTIONS** MUCH MORE **EFFECTIVELY**

THE **INNOVATION CYCLE** HAS QUICKENED - PROMISING NEW USES ARE QUICKLY DIFFUSED THROUGH THE REAL-TIME ONLINE CHANNELS. AT THE SAME TIME, WE QUICKLY STAMP OUT SPURIOUS AND UNFOUNDED OFF-LABEL USES. THE PHARMACEUTICAL AND DEVICE INDUSTRY, ALONG WITH THEIR CLINICAL PARTNERS, DEVELOP **FASTER, BETTER AND CHEAPER** NEW TECHNOLOGIES AND CREATIVE USES OF EXISTING TECHNOLOGIES.

2. An effort to address capacity for clinical and comparative effectiveness research should be open to reset our definitions and assumptions about health data and research approaches

# **Kenneth Buetow, National Cancer Institute**

- The current world of biomedicine is best characterized as information “islands”
- Information dissemination uses methods recognizable to Gutenberg

Presentation to AHIC July 29, 2008

[http://www.hhs.gov/healthit/documents/m20080729/06c\\_buetow\\_files/800x600/slide5.html](http://www.hhs.gov/healthit/documents/m20080729/06c_buetow_files/800x600/slide5.html)



Albert Einstein said, “Insanity is doing the same thing over and over again and expecting different results” ...

# The Way We Do it Today

- Most of the effort in trying to collect, clean and then “silo” data from a decentralized and fragmented system.
- Places a huge burden on data “providers” to submit the (same) information repeatedly to different repositories
- Creates separate repositories for each specific purpose at great cost in money and time
- Poorly adaptable and therefore “success” is elusive
- Creates privacy and security vulnerabilities
- Lacks connectivity, feedback, and broad USE for better decision-making
- Does not include the consumer (and often not the provider) as a key and active participant

# Its not just about data

- An explosion of data
- 450,000 peer-reviewed medical journal articles are published each year. David Adams, "Information Overload", December 8, 2005 – Available at <http://www.smh.com.au/articles/2005/12/06/1133829599706.html>
- But, we have slow and uneven distribution of innovation and information

# Where has the typical gap between clinical research and care delivery been most successfully overcome?

- Childhood cancer is an often used example of an area where the silos of clinical care and clinical research have been “connected”
- The result has been dramatic improvement in survival over the last 20-30 years
- Clinicians and researchers are part of a unique community that has been able to utilize clinical data continuously to evaluate outcomes to improve protocols and treatments
- This was not accomplished because of a special network or early EHR adoption

**A networked society has already  
begun to change traditional research  
paradigms**

“We believe that the Internet can democratize patient data and accelerate research like never before”

“[PatientsLikeMe](#) was built to... accelerate the transfer of knowledge about what works and what does not. Today, PatientsLikeMe has data on the progression and history of more than 1600 ALS patients - twice the number in the largest ALS trial in history. Even before the trial results were published, 50 patients worldwide who had elected to start taking lithium, in collaboration with their doctors, have been tracking their progression and blood levels on PatientslikeMe. This is more than twice the number of patients participating in the trial itself! We have data on historical forced vital capacity, the ALS Functional Rating scale, and a full symptom battery for most of the patients who have started, as well as for all the other non-lithium users in our system.”

(from <http://blog.patientslikeme.com/>)

**Patients Like You**

[Home > Patients](#)

**Patient Spotlight**

**actualized**

Male, 59 years, Surry, ME



ALS: 2 yrs

I am living on the ocean, in the woods in Maine with best friend (wife) of 35 years, our two dogs and a cat. We have 2 sons and a daughter-in-love. My background is education and psychotherapy. My philosophy is to live each day to fullest with gratitude and a positive mental attitude. [More](#)

**Patient Spotlight**

**ZenArcher**

Male, 39 years, McEwensville, PA



ALS: 2 yrs

I've been married to my wife Tammy for 15 years and we have two wonderful girls. We live in a small town just outside Williamsport, PA (the home of the little league baseball world series). [More](#)

**Find Patients**

Search over 6245 patients.

Location | Age | Username | Treatment | Symptom

Any

[Find Patients](#)

[Advanced Search](#)

[Patients with most updates](#) | [See more >](#)

Status	Updates	Updates
MS: 26 yrs thjuland	symptoms updated (1 day ago)	1090 updates
MS: 3 yrs NIM	symptoms updated (less than 1 day ago)	921 updates
MS: 6 yrs Cyprian1	symptoms updated (3 days ago)	658 updates
ALS: 3 yrs john33	outcomes updated (about 1 months ago)	501 updates
ALS: 7 yrs Jeannie	outcomes updated (1 day ago)	453 updates
PD: 3 yrs ukelady	treatments updated (2 days ago)	491 updates
MS: 3 yrs pinkbutterflies	outcomes updated (about 1 week ago)	414 updates
MS: 33 yrs 		

# “the first real-time, real-world, open and non-blinded, patient-driven trial”.

patientslikeme™ Join N   
 Already a

**All** | ALS | HIV | MS | Mood | PD

Patients | Treatments | Symptoms | **Research** Search this site

**Research: Lithium & ALS** Home > Rese

**Filter Patients By...** Filter Patients Reset

**Type of Onset**

- Any (including unknown)
- Bulbar
- Limb
- Breathing

**Time Since Onset**

- Any (including unknown)
- Less than 2 years
- 2-5 years
- More than 5 years

**Severity**

- Any (including unknown)
- FRS more than 36
- FRS 36-18
- FRS less than 18

**Age Range**

- Any (including unknown)
- under 40
- 40-49
- 50-59
- 60-69
- 70 or older

**Summary** | Individuals | Graph | Side-Effects | Map

This is a collaborative project which was first initiated by [Karen Felzer, PhD.](#) and [Humberto Macedo](#), along with all the patients involved in the "Lithium Spreadsheet" who have demonstrated such leadership to this community. This project is for and about you so please send us your suggestions and ideas and we will work hard to incorporate them.

Lithium Population			ALS Population		
<b>Type of Onset</b>					
Bulbar	50	24%	346	21%	
Limb	157	75%	1278	77%	
Breathing	2	1%	39	2%	
<b>Time since Onset</b>					
Less than 2 yrs	77	36%	321	19%	
2-5 yrs	106	50%	794	47%	
More than 5 yrs	31	14%	576	34%	
<b>Time since Diagnosis</b>					
Less than 2 yrs	130	63%	668	42%	
2-5 yrs	49	24%	420	26%	
More than 5 yrs	12	6%	315	20%	
<b>Sex</b>					
Male	137	71%	945	59%	
Female	57	29%	645	41%	

**Resources on Lithium**

[Lithium and ALS FAQ](#)

[Does it work? Lithium and ALS](#)

Email your questions and suggestions to [support@patientslikeme.com](mailto:support@patientslikeme.com)

Patients On Lithium: 210  
 At Target Blood Level: 68  
 No Longer on Lithium: 56  
 Deceased: 5

CONNECTING FOR HEALTH COMMON FRAMEWORK



3. Articulate new, broadly accepted working principles based on 21<sup>st</sup> century information paradigms

# The 21<sup>st</sup> century Health care environment

- Increasingly distributed needs for sharing and accessing information about what works best
- Increasingly sophisticated “nodes” capable of analytics
- Seeing research as occurring in a connected environment, not a database (“connecting silos into a community”)
- Clinicians as researchers and researchers as clinicians
- Embracing consumers as key producers, users and potentially managers of clinical data and partners in the research process
- A networked and distributed approach to information sharing and evidence creation
- Tolerance for incremental progress

Address <http://www.newsobserver.com/news/story/956815.html>

Pop-up blocked. To see this pop-up or additional options click here...

**THE NEWS & OBSERVER**  
newsobserver.com

[Subscribe](#) | [Subscriber Services](#) | [Subscriber Rewards](#)

[Register / Log In](#)

Web Search powered by **YAHOO! SE**

[Home](#) | [News](#) | [Sports](#) | [Lifestyles](#) | [Business](#) | [Politics](#) | [Opinion](#) | [Obits](#) | [Blogs](#) | [Multimedia](#) | [Classifieds](#)

## Local & State

**Counties:** Wake | Durham | Orange | Johnston | Chatham **Topics:** Crime & Safety | Health & Science | Education

**Columnists:** John Drescher | Dennis Rogers | Barry Saunders | Ruth Sheehan | Road Worrier

Published: Feb 21, 2008  
Modified: Feb 21, 2008

## State hacking through worst of flu season

This year's vaccination is a flawed match for current viruses it should fight

**MANDY LOCKE AND LORENZO PEREZ, Staff Writers**

Your son can't shake his cough. At work, you're doing the tasks of three while your colleagues are home in bed. Grandma waited five hours to be seen at the hospital's emergency department last night.

Sound familiar? North Carolina is smack dab in the worst of the seasonal flu. We're at the top of a two-week peak that's forced long lines at pharmacies, long waits at doctors' offices and toppled even those smart enough to get the flu vaccine this year.

Is it the worst flu season in recent years? The ailing would declare it so. But public health officials are reluctant to say that, mainly because reports they receive from health providers come voluntarily and are not consistent year to year. Doctors insist we always think it's the worst the middle of it.

Still, there are reasons why it's bad:

\* The vaccine missed the mark because the antibodies didn't match the current virus, said Jeff Engel, the state health epidemiologist. The

### Story Tools

 [Printer Friendly](#)

 [Email to a Friend](#)

 [Enlarge Font](#)

 [Decrease Font](#)

 [BOOKMARK](#) 

 [Buzz up!](#)

### COLD OR FLU

Here's a guide to determining whether the flu is responsible for your sniffles:

[Symptoms COLD/FLU](#)

Is it the worst flu season in recent years? The ailing would declare it so. But public health officials are reluctant to say that, mainly because reports they receive from health providers come voluntarily and are not consistent year to year. Doctors insist we

CONNECTING FOR HEALTH COMMON FRAMEWORK

# Syndromic.org

**syndromic.org**

Welcome to the Homepage of the  
**International Society for Disease Surveillance**

**Announcing the 2008 Conference!!**  
*The Seventh Annual International Society for Disease Surveillance Conference*  
Raleigh, North Carolina, USA  
**December 3-5, 2008**  
Pre-conference Workshop  
**December 2-3, 2008**  
[View the presentations](#) from the Sixth Annual International Society for Disease Surveillance Conference.

**Here are several of the top rated presentations from the Sixth Annual International Society for Disease Surveillance Conference.**

 [Consultative meeting on Chief Complaint Classifiers and Standardized Syndromic Definitions - Wendy Chapman](#)

**In the News**

1/30/2008  
Data Collection Helps Health Care Providers - [Mount Vernon News](#)

1/02/2008  
Twelve states lack CDC-compatible disease surveillance system - [Government Health IT](#)

12/20/2007  
Sick to Your Stomach? You're Not Alone - [New York Times](#)

12/05/2007  
EPA Funded Research Explores Connection Between Respiratory Illnesses, Air Quality and Weather in New York City - [Environmental Protection Agency](#)

11/19/2007  
Skin Disorders Found Among Katrina And Rita Construction Workers - [Medical News Today](#)

**Receive Email Updates**

**Home**  
**Society**  
**Committees**  
**Conferences**  
**Workshops**  
**Online Journal**  
[Advances in Disease Surveillance](#)  
**Public Wiki**  
**Technical Contest**  
**Projects**  
**Newsletter**  
**In the News**  
**New Publications**  
**Legal Matters**  
**Resources**  
**Site Info**  
**Site Search**

CONNECTING FOR HEALTH COMMON FRAMEWORK

# DiSTRIBuTE for Flu Surveillance

<http://www.syndromic.org>

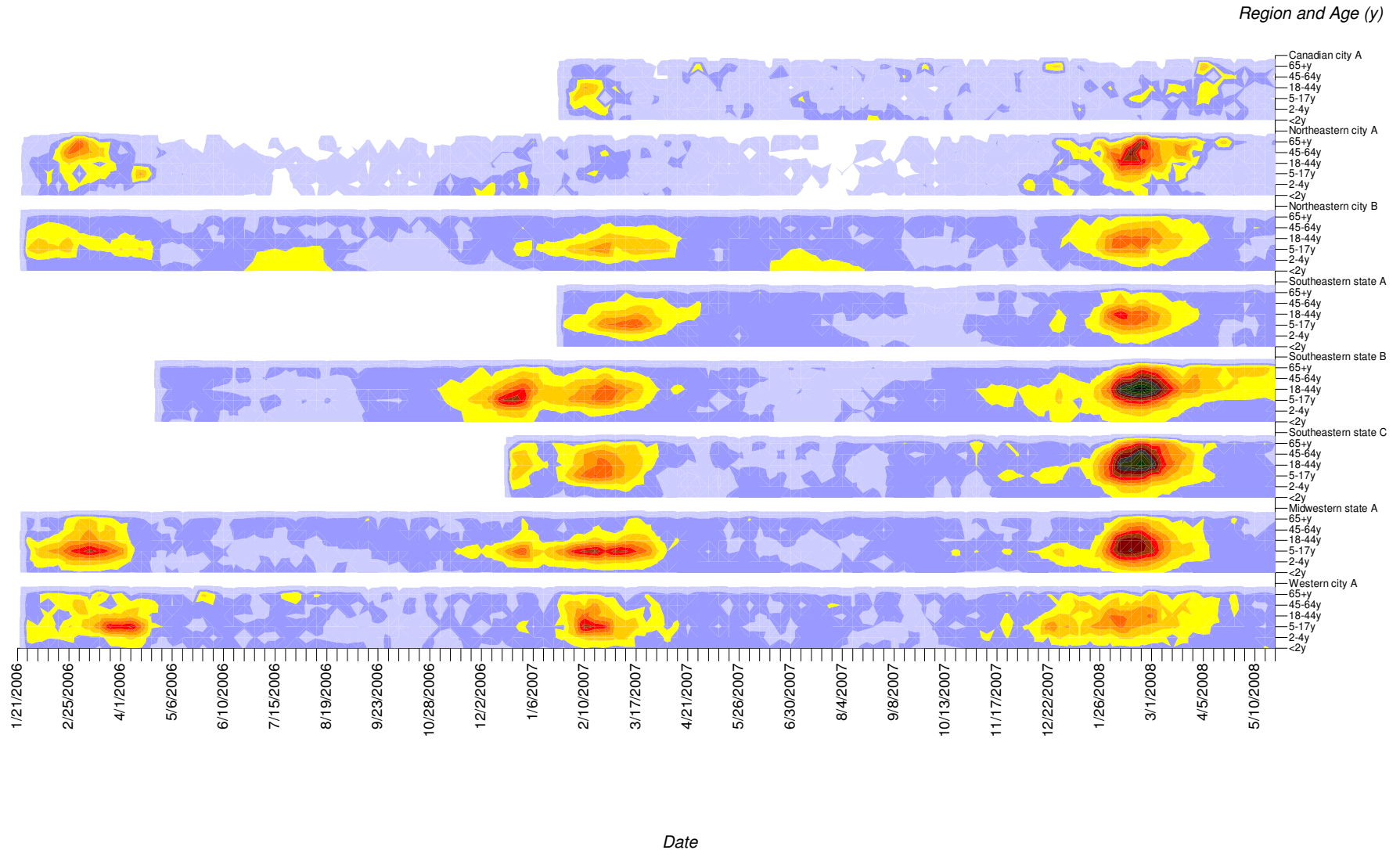
- Uses summarized counts of influenza-like-illness (ILI) syndrome reported by age group from existing syndromic surveillance systems.
- The data is visualized and used to provide public health practitioners with age-specific weekly trends in influenza morbidity.
- The DiSTRIBuTE approach changes the traditional surveillance paradigm from central data collection and analysis to one of distributed data collection and analysis with central monitoring of summary information.
- By limiting the data request to the information that is truly the minimum required (summarized counts), the system has retained the ability to demonstrate meaningful flu trending data quickly and cost effectively.



International Society  
For Disease Surveillance

# DiSTRIBuTE Visualizations - Week 2008-21 (ending Saturday, May 24, 2008)

Surface plots depict relative increase in ED syndrome visits as observed / baseline by jurisdiction and age.



Relative increase (observed/linear-baseline).

CONNECTING FOR HEALTH COMMON FRAMEWORK

# Results from the 2007/2008 Influenza Season

- During 2007/08 season, over 300,000 encounters were reported per week from eight participating sites in the DiSTRIBuTE network- a number equivalent to the weekly total collected from all sites in the current national manual reporting system.
- By limiting the data request to the information that is truly the minimum required (summarized counts), the system has retained the ability to demonstrate meaningful flu trending quickly and cost effectively.



## 4. An information policy

What are the network requirements?

**Motive, standards, methods and rules—that's how you get leverage**



# Americans recognize the “upside”... and the “downside”...

- Significant concern about privacy and security
  - 85% say protecting confidentiality absolutely essential
  - FACCT survey: 91% “very concerned” (barrier for 1/4)
  - Strong desire to “control” who sees health information
- Fear of misuses
  - 52% believe employer uses medical info to affect personnel or insurance benefits (CHCF Survey 2005)
  - 85% believe if genetic test results known to insurers, would refuse policies or charge more (Genetics and Public Policy Center Survey 2007)
- Three-quarters of Americans are willing to share their personal information to help public officials look for disease outbreaks and research ways to improve the quality of health care if they have safeguards to protect their identity (Markle Survey 2006).

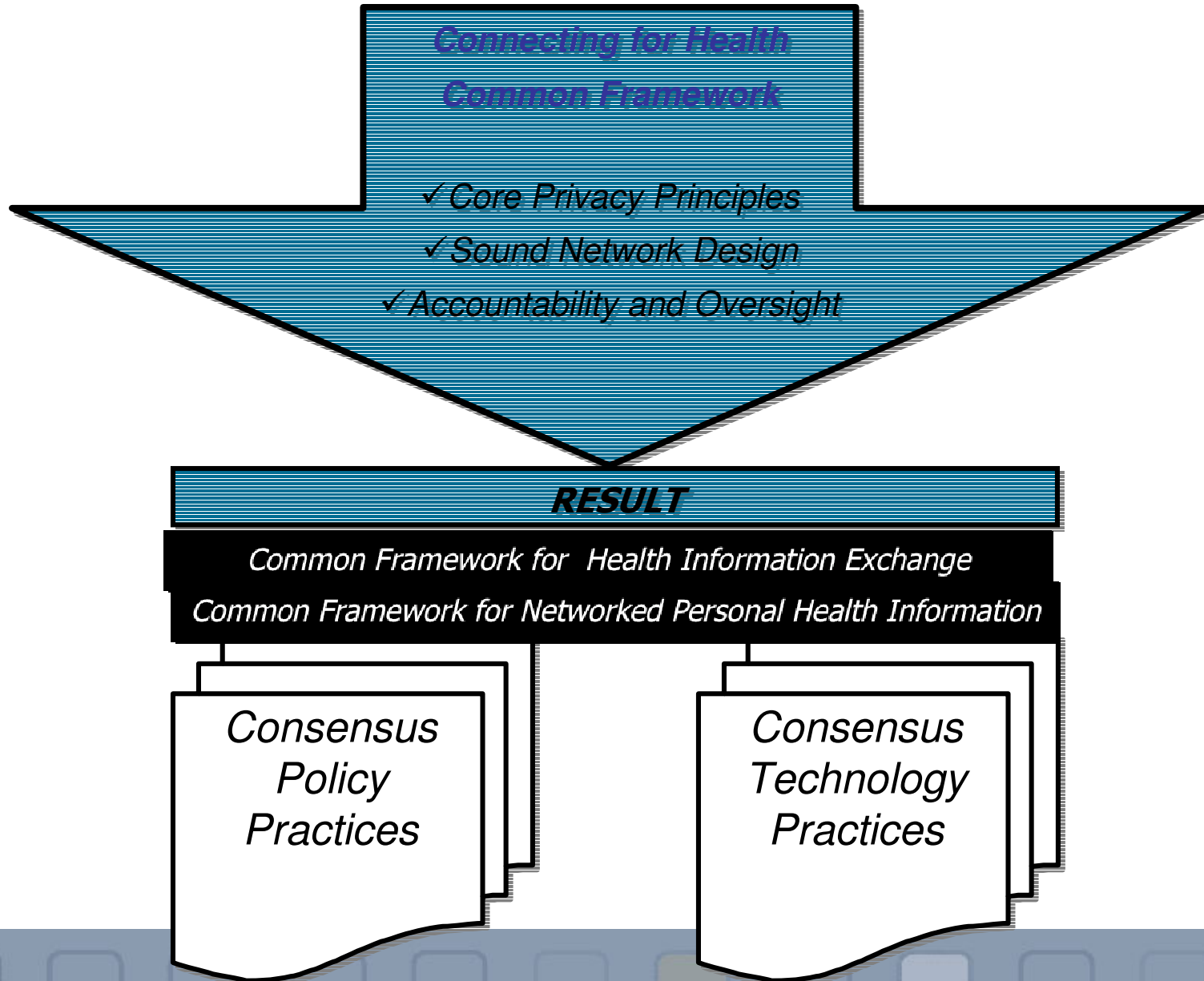
## **Connecting for Health...*A Public Private Collaborative***

- Convened and operated by the Markle Foundation since 2002, additional support from the RWJF
- Brings together private, public, and not-for-profit groups
- Works to accelerate the development of a health information-sharing environment to improve the quality and cost effectiveness of health care while protecting privacy
- Our approach is rooted in looking at technical AND policy issues together!
- <http://www.connectingforhealth.org>

# Connecting for Health

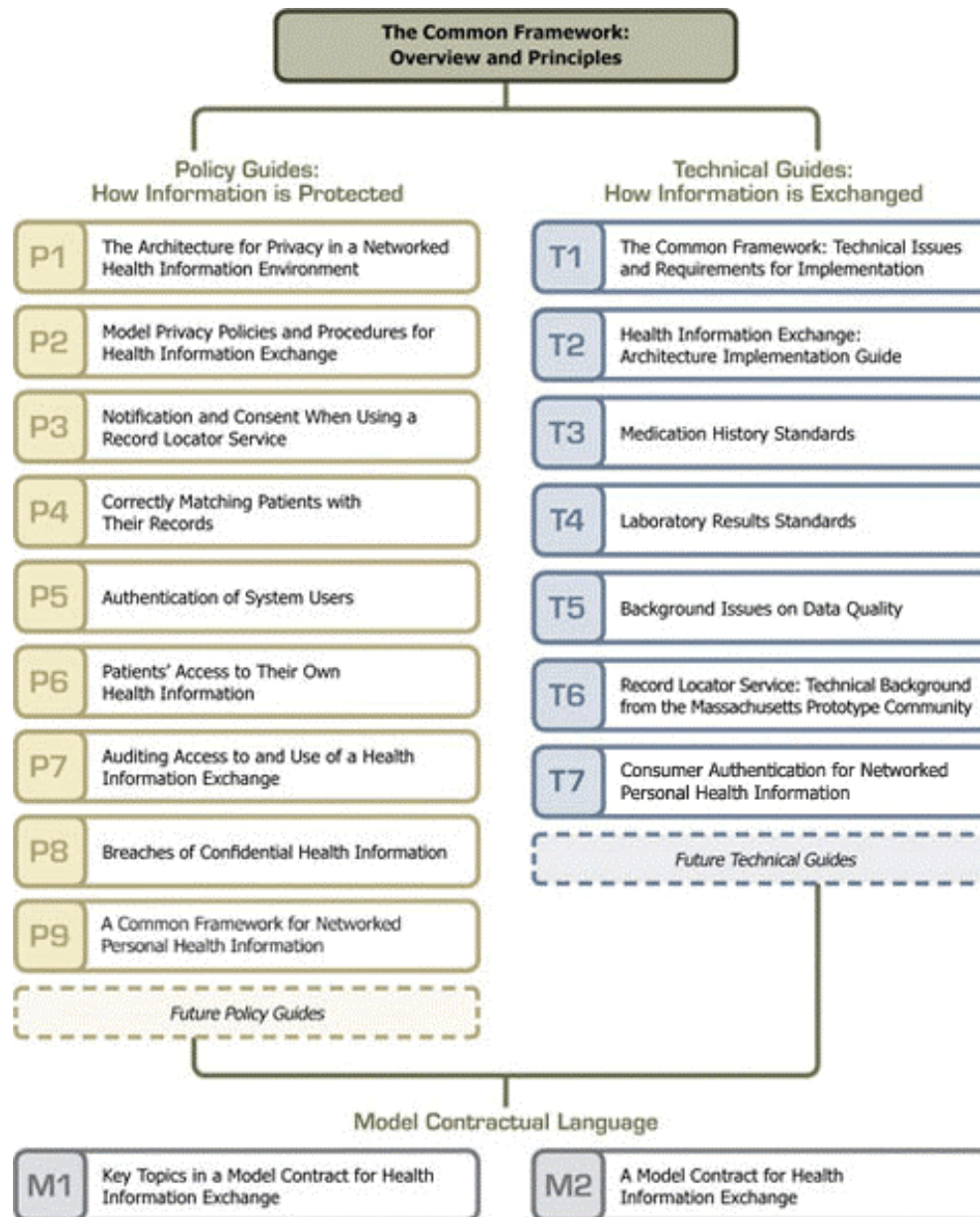
- **Connecting Professionals**: Common Framework for Health Information Exchange (released April 2006)
- **Connecting Consumers**: Common Framework for Networked Personal Health Information (full compendium to be released 2<sup>nd</sup> quarter 2008)
- **Connecting All Health Decision Makers**: Current work...how can the Common Framework support the nation's goals of improving the health of entire populations?
  - Bolstering **research** capabilities and enabling clinical practice to fully participate in and make use of scientific evidence
  - Increasing the effectiveness of our **public health system**
  - Empowering consumers and professionals with information about **cost, quality, and outcomes**

# Our Approach

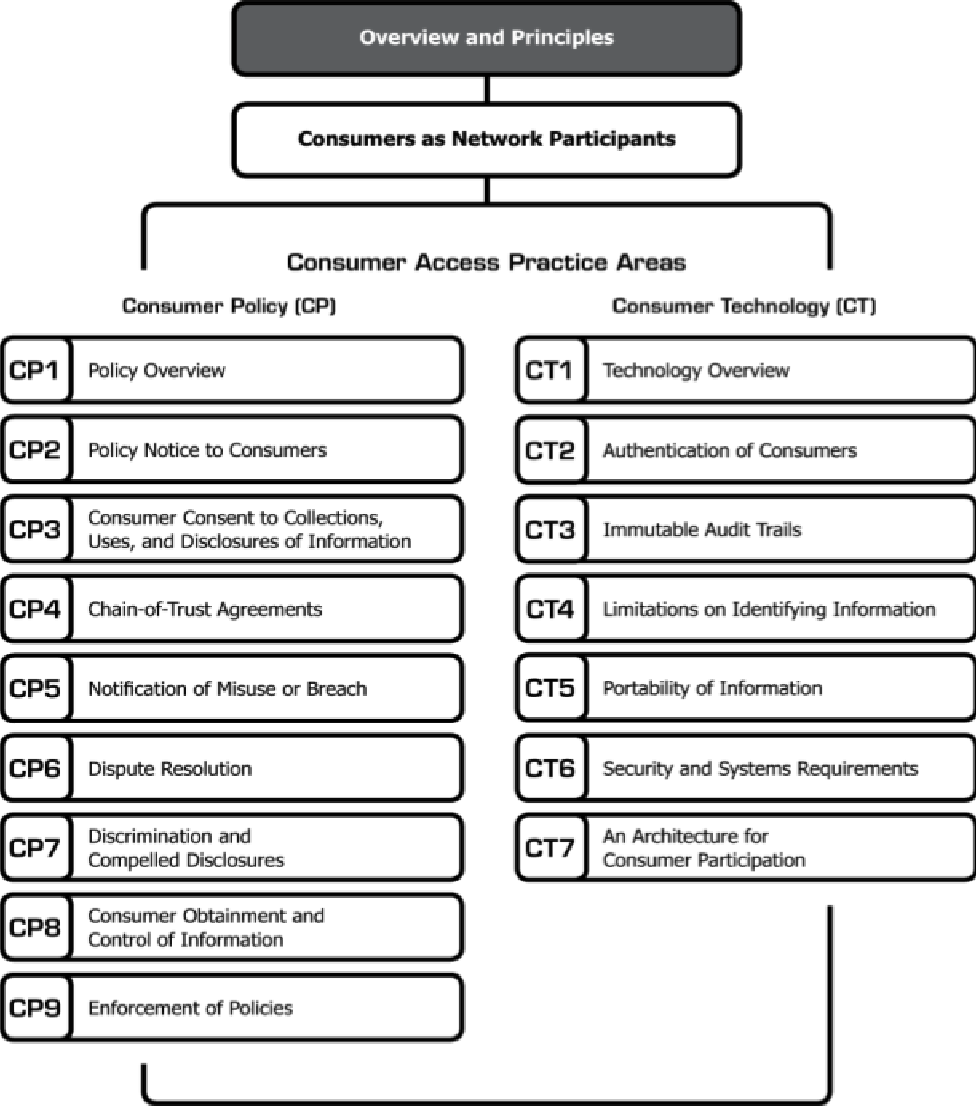


# Architecture for Privacy in a Networked Health Information Environment

1. Openness and Transparency
2. Purpose Specification and Minimization
3. Collection Limitation
4. Use Limitation
5. Individual Participation and Control
6. Data Integrity and Quality
7. Security Safeguards and Controls
8. Accountability and Oversight
9. Remedies



# The Common Framework for Networked Personal Health Information



## *Endorsers of the First Detailed, Consensus-Based Framework for Networking Personal Health Records*

AARP

Aetna

American Academy of Family Physicians

Association of Online Cancer Resources (ACOR.org)

America's Health Insurance Plans

BlueCross BlueShield Association

CapMed

Center for Democracy and Technology

Center on Medical Record Rights and Privacy

Cisco Systems Inc.

Consumers Union

Dossia

FollowMe

Google

Geisinger Health System

Health Care For All

InterComponentWare Inc.

Intuit Inc.

MedicAlert

Microsoft Corp.

National Breast Cancer Coalition

National Partnership for Women and Families

NewYork-Presbyterian Hospital

Pacific Business Group on Health

Palo Alto Medical Foundation

Partners Healthcare System

RxHub

SureScripts

U.S. Department of Veterans Affairs

Vanderbilt Center for Better Health

WebMD



**Last year we worked on a set of  
consensus based “First Principles for  
Population Health”**

**[www.connectingforhealth.org](http://www.connectingforhealth.org)**

Response to an AHRQ RFI on a National  
Data Stewardship Entity

# 1. Designed for Decisions

**A 21st century health information environment will focus on improving the decision-making ability of the many actors in the health sector.**



## 2. Designed for Many

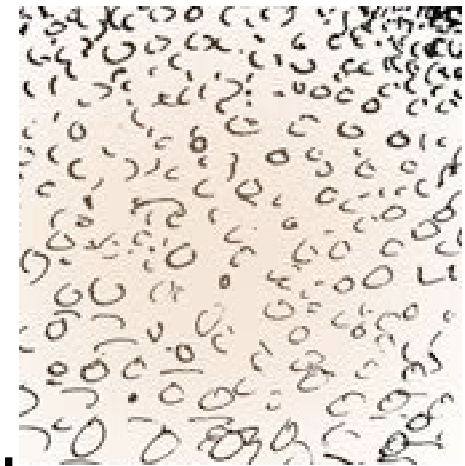
**A 21st century health information environment should empower a rich variety of users.**



### 3. Shaped by Public Policy Goals and Values

**A 21st century health information environment should achieve society's goals and values –**

e.g.: improve the health, safety, and efficiency; reduce threats to public health, etc.



### 4. Boldly Led, Broadly Implemented

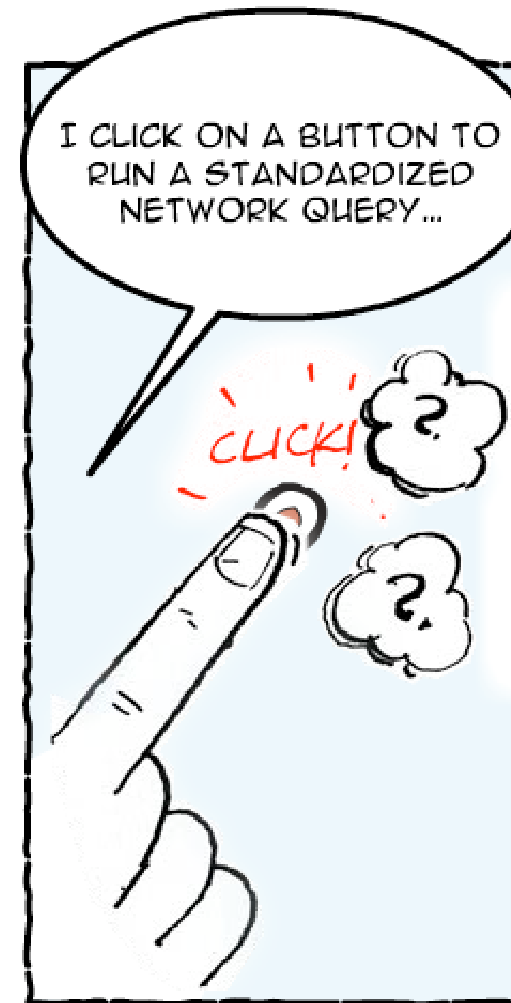
**A 21st century health information environment should be guided both by bold leadership and strong user participation.** The network's value expands dramatically with the number of needs it can meet and the number of participants it can satisfy.

## 5. Possible, Responsive and Effective

A 21st century health information environment should grow through realistic steps.

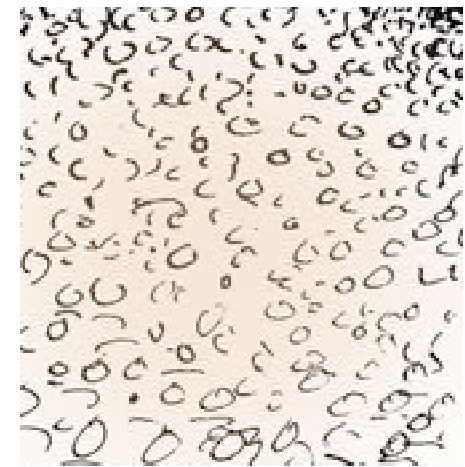
## 6. Distributed but Coordinated and Queriable

A 21st century health information environment should be comprised of a large network of distributed data sources.



## 7. Trusted through Safeguards and Transparency

**A 21st century health information environment should earn and keep the trust of the public through policies that provide safeguards and transparency.**



## 8. Layers of Protection

**A 21st century health information environment should protect patient confidentiality by emphasizing the easy movement of queries and responses, rather than of raw data.**

## 9. Accountability and Enforcement of Good Network Citizenship

**A 21st century health information environment should encourage and enforce good network citizenship by all participants.**

[www.connectingforhealth.org](http://www.connectingforhealth.org)